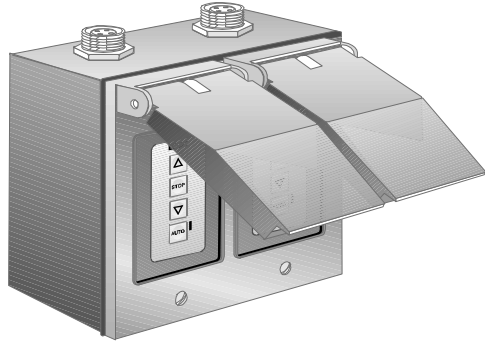




DECORATOR SOMFY MATIC™ OUTDOOR PLUG-IN SYSTEM

Installation and Operation Instructions

DESCRIPTION

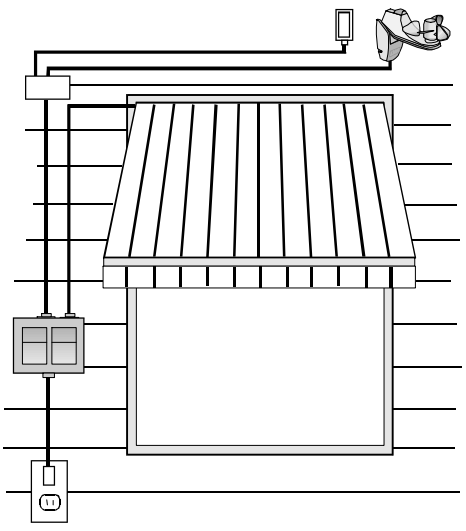


The Outdoor Decorator Somfy Matic (DSM) enables a retractable awning to provide shading from the sun and protection from the wind automatically and conveniently. The sun and wind sensors continually monitor sun intensity and wind speed, triggering the control unit to extend or retract the awning as needed.

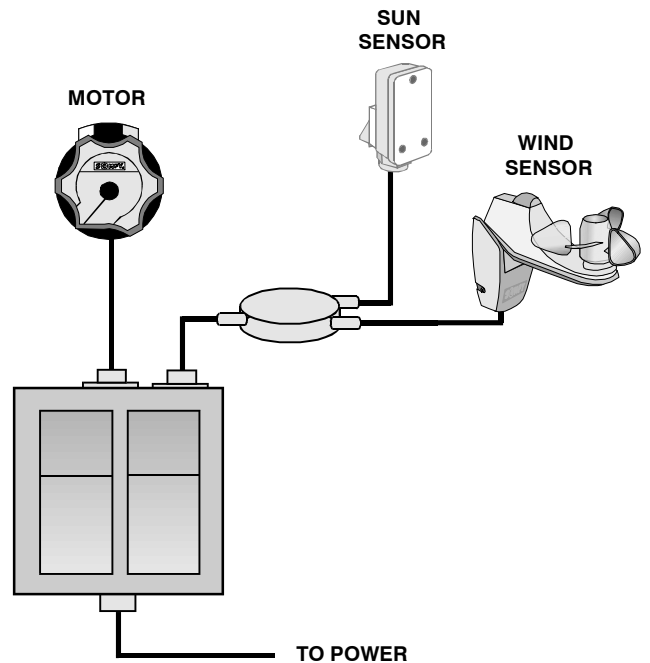
The Outdoor DSM features advanced circuitry that assures factory preset accuracy and proven reliability. It aids in protecting furniture and carpeting from fading and saves on heating and air conditioning costs. The system is comprised of plug-in components, so installation is simple and quick.

INSTALLATION PROCEDURES

1. Make sure that the sun sensor is facing the sun and not shaded by trees or other building structures. It should be mounted as high as possible, no more than 100 feet from the Outdoor Decorator Somfy - Matic. The detection angle is up to 100 degrees wide from the center of the sensor face.
2. The wind sensor should be placed close to the awning or shading system to make sure the wind speed is measured at the product. Guard against installing the wind sensor near an obstruction such as a chimney, gutter or the awning itself. The wind sensor should not be more than 100 feet from the Outdoor DSM.



Left Mount (Shown): Cat. No: 6300980
Right Mount: Cat. No: 6300981



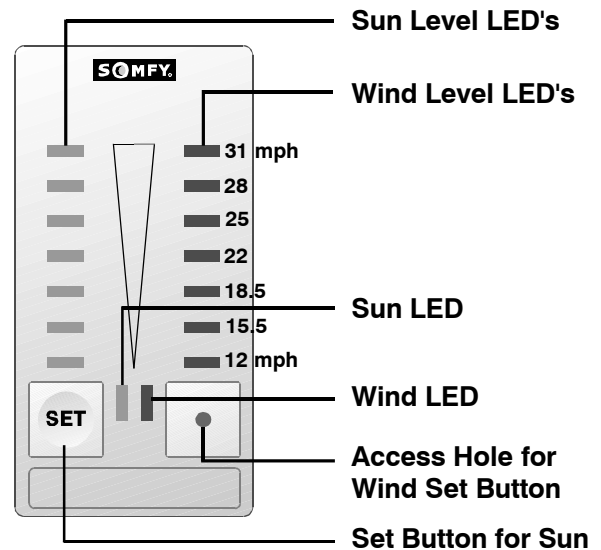
3. Mount the sun and wind sensor junction box in a concealed location such as under an eave.
4. Connect the motor cable to the 4-conductor receptacle on the top of the control box. The sensor cable connects to the 3-conductor receptacle.
5. Plug the power cable into a weather proof receptacle..

OPERATING PROCEDURES

1. Pressing the UP button will move the awning in, while the DOWN button will extend the awning when pressed. If the motor does not move in the correct direction, the incorrect model Outdoor DSM is installed. The appropriate model Outdoor DSM must be obtained..
2. Pressing the STOP button will stop the motor in its present position.
3. When the monitored sun intensity is greater than the Outdoor Somfy Matic setting, the DOWN direction will activate after 3.5 minutes. The sun LED will light for as long as this condition exists. If the sun intensity is less than the Outdoor DSM setting, the UP direction will activate, if previously down, after 12 minutes. The sun LED will blink during this time period.
4. When the monitored wind speed is greater than the Outdoor DSM setting, the UP direction will activate after 2 seconds. The wind LED will light as long as this condition exists. When the wind speed drops below the set value, the Somfy Matic will return to normal mode after 15 minutes. The wind LED will blink and the motors are prevented from operating during this time period.
5. When the AUTO button is pressed, the AUTO LED will turn on or off depending on its previous status. Manual mode is designated by the LED being off. If the Outdoor Somfy Matic is in manual mode, the sun level has no influence on motor control. The wind speed is constantly monitored and acted on regardless of AUTO setting.

SETTING THE WIND AND SUN LEVELS

1. Pressing the sun set button for less than 2 seconds will display the current sun setting on the row of yellow LEDs. One LED will light for 5 seconds to signify the level. The Outdoor DSM is factory preset at the exact middle.
2. Pressing the wind button (which is only accessible by inserting a thin tool such as a pencil point through an opening in the front plate) for less than 2 seconds will display the current wind setting on the row of red LEDs. One LED will light for 5 seconds, signifying the present level. The wind speed LEDs are divided as follows; the bottom LED is 12 m.p.h., with each higher LED increasing in increments of 3. The top LED is equivalent to 31 m.p.h. The Outdoor Somfy Matic is factory preset to 22 m.p.h., or the middle LED.
3. Depressing the wind or sun switch for more than 2 seconds will cause the coinciding row of LEDs to turn on in sequence. Starting from the bottom LED, or lowest level, to the top LED, or highest level, the sequence will repeat until the set button is released. When the LED matching the desired level is lit, release the button. This will establish the new threshold setting.



TEST PROCEDURES

To verify proper operation of the Decorator Somfy Matic after initial installation, please follow the following steps.

1. Verify proper operation of the motor; pressing the UP button should bring the awning in, pressing DOWN should extend the awning out, and the STOP button should stop the awning at its present position.
2. The AUTO LED should turn on and off when the AUTO switch is pressed.
3. The sun level LEDs should light if the sensor is activated by either the sun or other light source, such as a flashlight.
4. The wind level LEDs should light if the sensor is spun either by hand or other source, such as a garden hose or fan.
5. To reset the lock-out delay, interrupt the power to the Somfy-Matic

SOMFY SYSTEMS, INC.
47 Commerce Drive
Cranbury, NJ 08512

SOMFY CANADA
6315 Shawson Drive, Unit #1
Mississauga, Ontario L5T1J2

SOMFY MEXICO S.A. De C.V.
Calle 3 No.47, Loc.E-5
Fracc Ind. Alce Blanco
Nau., Edo. de Mex C.P. 53370, Mex