

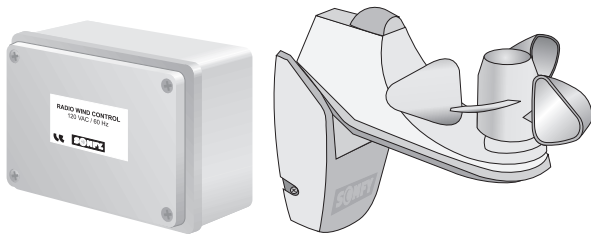


EOLIS RECEIVER

Inteo Wind - Remote

Installation and Operating Instructions

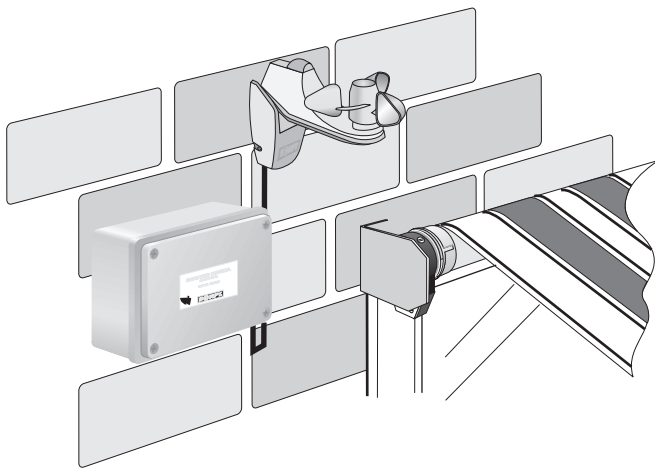
DESCRIPTION



Part No: 1816073

The Somfy Eolis Receiver is a single motor control designed for residential use. It includes an integrated radio receiver, wind sensor and low voltage switch inputs. Wind speed is continuously monitored, triggering the control to retract awnings or shutters automatically as needed. Using the Telis Transmitters, it is possible to operate the controls individually or in groups. Two user-defined intermediate positions can be programmed. This new control is packaged in a weatherproof enclosure and includes watertight strain-relief fittings for wires entering the box.

INSTALLATION PROCEDURES



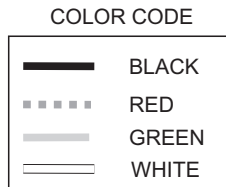
1. The Eolis Receiver should be mounted as close to the motor as possible. If mounted outside, ensure that the connections are facing down to avoid rain seepage. Avoid mounting the control against any metallic surface, as this may affect the radio reception.
2. Connect high and low voltage wires according to the wiring diagram on the next page. It is recommended that the low voltage wiring is done first, for easier access to the terminals. Make sure to use included watertight strain relief fittings to maintain the weatherproofing of the enclosure.
3. The wind sensor should be placed close to the awning or shading system to make sure the wind speed is measured at the product. Guard against installing the wind sensor too close to an obstruction such as a chimney, gutter or the window treatment itself, which could block the wind and cause erroneous sensor readings. The sensor should not be more than 100 feet from the control. Remove the back cover of the sensor and connect the two-wire cable (included) from the terminals on the sensor to the terminals on the control. Refer to the diagram on the next page.
4. When using a low voltage switch, it should be located no more than 100 feet from the Eolis Receiver.

SOMFY CANADA
6315 Shawson Drive, Unit #1
Mississauga, Ontario L5T1J2

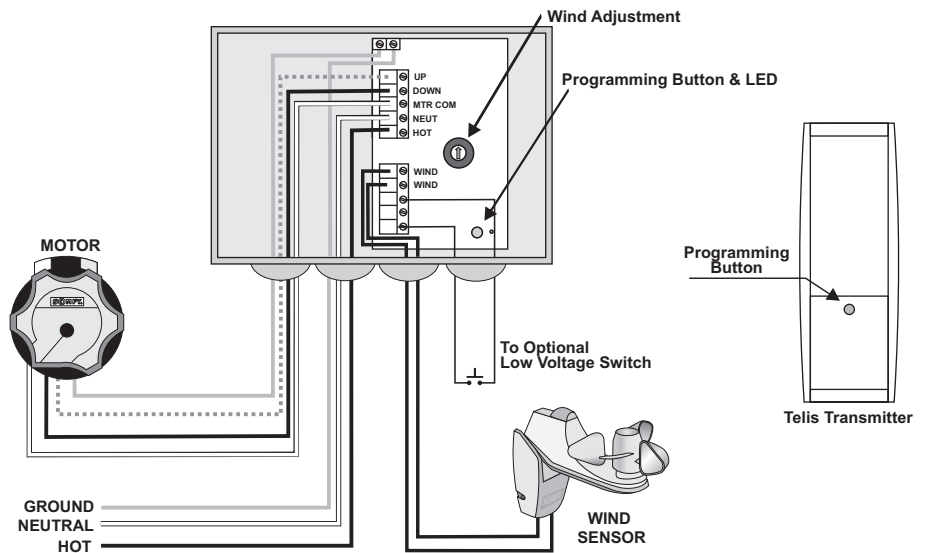
SOMFY SYSTEMS, INC.
47 Commerce Drive
Cranbury, NJ 08512

SOMFY MEXICO S.A. De C.V.
Temazcal 19-B, La Loma
Tlalnepantla, Edo de Mex.
Mexico 54130

WIRING DIAGRAM



NOTE:
Mount control with fittings facing downward!



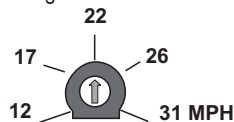
OPERATING INSTRUCTIONS

System Set Up

1. With power off, wire the Eolis Receiver as indicated above. Turn all circuit breakers on (motors should not move).
2. Set the Eolis Receiver into programming mode by pressing the programming button on the receiver until the LED lights (about 5 seconds).
3. Press the programming button on the Telis1 or Telis4 transmitter. Make sure the desired channel is selected on the Telis4 before programming. The programming LED on the Eolis Receiver will blink indicating the transmitter has been memorized.
4. Operate each motor in the DOWN direction using the radio transmitter.
5. The motorized treatment should move down or out. If this is incorrect, turn off the circuit breakers and reverse the red and black wires of the motor. **FAILURE TO CORRECT THIS ERROR WILL CAUSE AWNING TO EXTEND DURING WINDY CONDITIONS AND MAY CAUSE SERIOUS DAMAGE.**

Setting The Wind Level

1. To change the wind sensitivity, simply rotate the wind adjustment knob to the desired setting.



Wind Adjustment Detail

Operating Procedures

TRANSMITTER

1. Pressing the UP button on the Telis transmitter will move the window treatment up or in. The DOWN button will move the treatment down or out.
2. To stop the motorized treatment at any time, press the CENTER button on the transmitter.
3. To reach one of the intermediate positions, the awning or rolling shutter must first be stopped at the upper or lower limit. Pressing the center button on the transmitter will move the window treatment to the dedicated position.

LOW VOLTAGE SWITCH

4. If desired, a single pole, single throw switch can be connected to the low voltage terminals as indicated above. Each press of the switch will sequence through the directions as follows;

DEPRESS 1	UP DIRECTION
DEPRESS 2	STOP
DEPRESS 3	DOWN DIRECTION
DEPRESS 4	STOP

WIND FUNCTION

5. When the monitored wind speed is greater than the setting, the UP direction will activate after 2 seconds. As long as the wind speed remains high, all other commands will be ignored.
6. When the wind speed drops below the set value, the Eolis Receiver will return to normal operation following a one minute delay.

PROGRAMMING PROCEDURES

RECORDING THE INTERMEDIATE POSITION FROM THE TOP OF THE WINDOW TREATMENT

- Bring the window treatment to its upper limit using the Telis transmitter. Press the DOWN and CENTER buttons simultaneously until the awning begins to move, then release.
- Stop the window treatment at the intermediate position desired. Press the CENTER button for 2 seconds to memorize that position.

RECORDING THE INTERMEDIATE POSITION FROM THE BOTTOM OF THE WINDOW TREATMENT

- Bring the motorized treatment to its lower limit. Press the UP and CENTER buttons simultaneously until the awning begins to move, then release.
- Stop the window treatment at the position desired. Press the CENTER button for 2 seconds to memorize that position.

DELETING AN INTERMEDIATE POSITION

- Briefly press the CENTER button of the Telis transmitter to reach the desired intermediate position.
- Continue to press the CENTER button for 10 seconds until the programming LED on the Eolis Receiver stops blinking. That intermediate position is now deleted.

TO ADD A NEW TRANSMITTER TO THE MEMORY OF THE RECEIVER

- Press the programming button (for more than 2 seconds) on a transmitter that is already memorized by the Eolis Receiver to wake up the receiver. The programming LED on the receiver will light. Press the programming button on the new transmitter to attach it to the Eolis Receiver.

TO REMOVE A TRANSMITTER FROM THE MEMORY OF THE RECEIVER

- Press the programming button on the Eolis Receiver until the LED lights. Quickly press the programming button on the transmitter you want to remove.

TO REMOVE ALL TRANSMITTERS FROM THE MEMORY OF THE RECEIVER (Resetting of the Eolis Receiver)

- Press the programming button of the Eolis Receiver until the LED blinks. This removes ALL memorized transmitters.